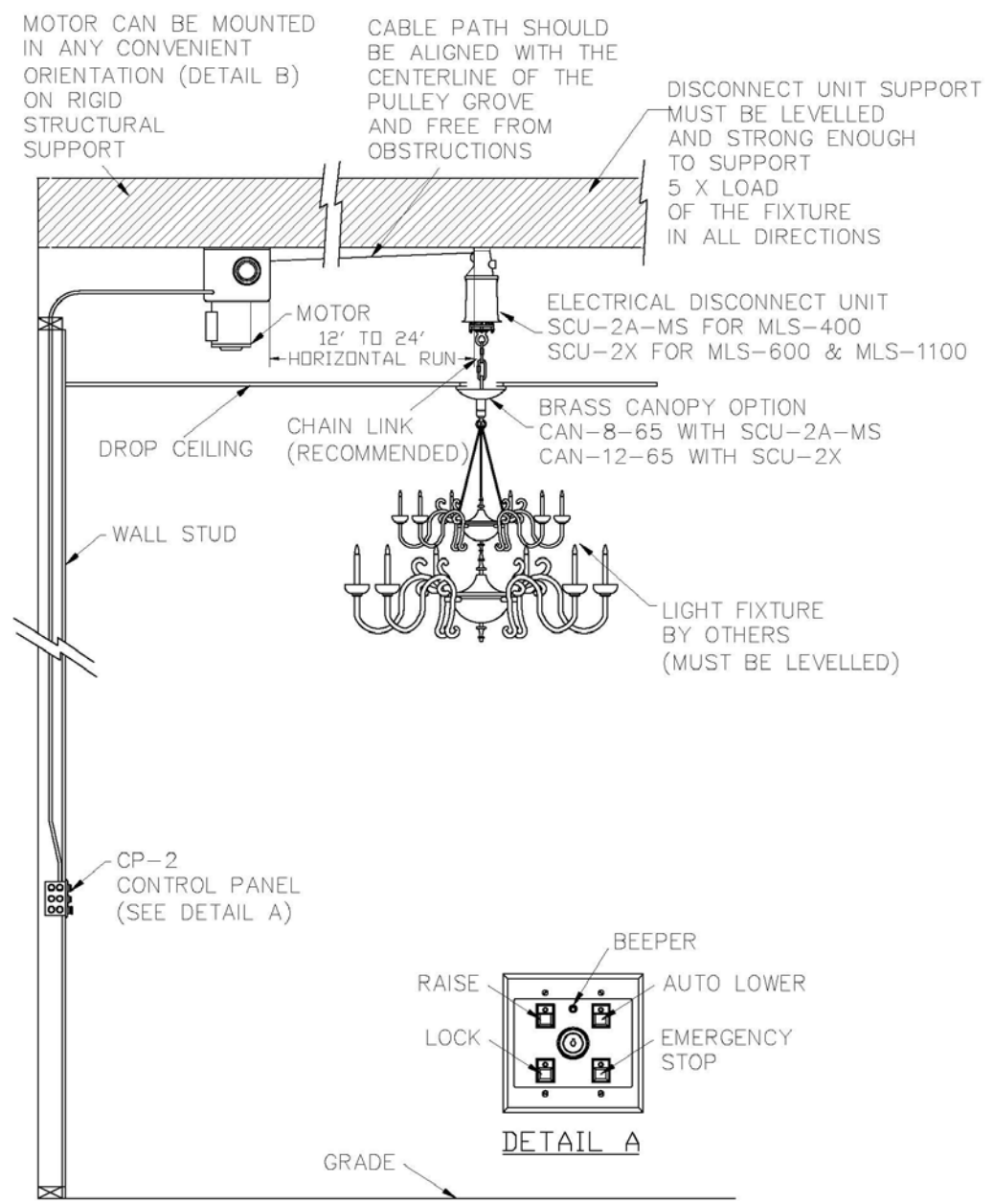




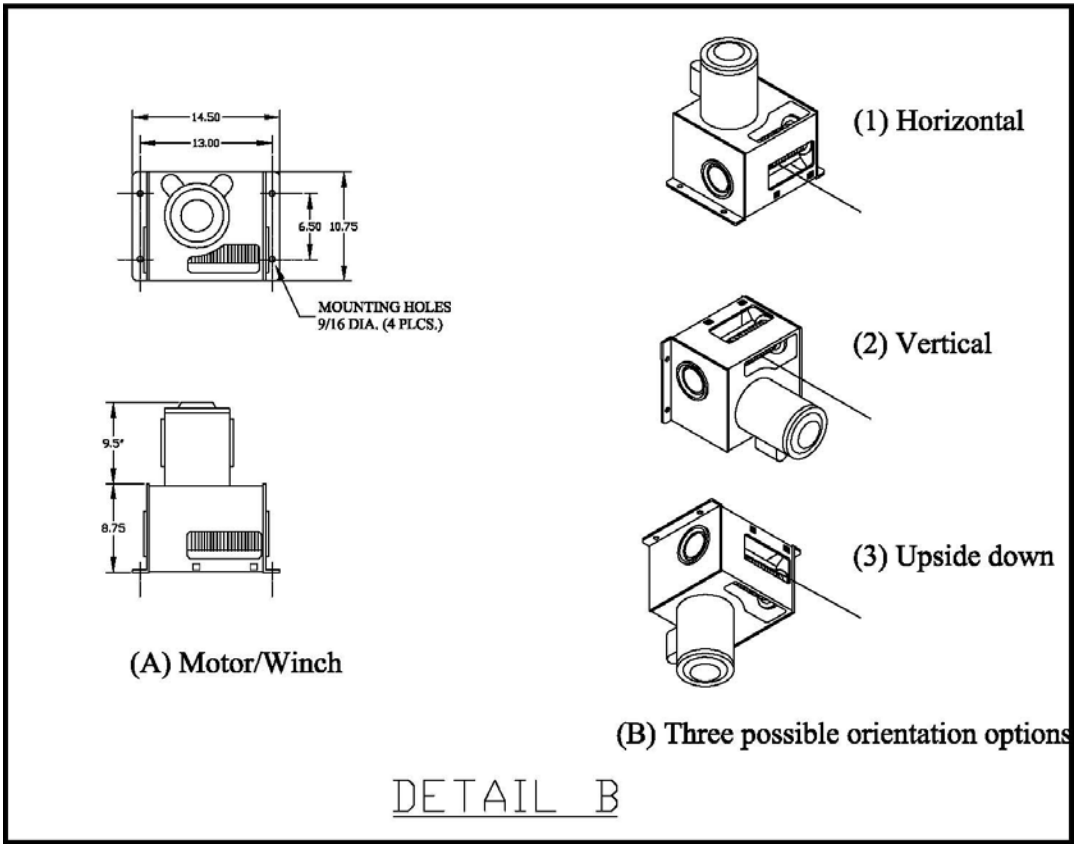
MOTORIZED LOWERING SYSTEMS

FOR FIXTURES WEIGHTING FROM 251 TO 1100 LBS.

DROP CEILING – SAMPLE LAYOUT



* All specifications subject to change without notice.



Specifications are subject to change without notice.



MOTORISED LOWERING SYSTEMS

ORDERING INFORMATION

Typical System Ordering Information:

GENERIC BILL OF MATERIAL FOR MOTORIZED LOWERING SYSTEMS						
MLS-400-TW4		MLS-600-TW5		MLS-1100-TW6		SYSTEM
301-400 lbs		401-600 lbs		601-1100 lbs		LOAD
QTY		QTY		QTY		DESCRIPTION
1	TW4	1	TW5	1	TW6	MOTOR ASSEMBLY
1	SCU-2A-MS	1	SCU-2X	1	SCU-2X	ELECTRICAL DISCONNECT UNIT WITH LOCKING MECHANISM
1	CP-2	1	CP-2	1	CP-2	CONTROL PANEL WITH BEEPER ASSEMBLY
1	GAXX08	1	GAXX08	1	GAXX08	CABLE ASSEMBLY

NOTE: PLEASE CONTACT FACTORY FOR DUTY CYCLES OF MOTOR ASSEMBLIES.

OPTIONAL	
SUFFIX	DESCRIPTION
-CAN	BRASS CANOPY
	CAN-8-65 for 301-400 lbs
	CAN-12-65 for 401-1100 lbs
-XC	X=NUMBER OF CONTACTS (up to 8)
	STANDARD 2 CONTACTS FOR 1 CIRCUIT
	PLUS ONE GROUND
-CL	CHAIN LINKS
	RECOMMENDED
-CR	CORROSION RESISTANT (contact factory for details)
-XX	CABLE LENGTH
	STANDARD 50'

Sample Part Numbers:

MLS-400-TW4-CAN-6C

Motorized Lowering System rated for 301-400 lbs.

This system comes with 50' cable, one canopy and 6 contacts for 3 circuits plus one ground. Pulleys or chain-links are not included.

MLS-600-TW5-65

Motorized Lowering System rated for 401-600 lbs.

This system comes with 65' cable, 2 contacts for single circuit plus one ground. Canopy, pulleys or chain-links are not included

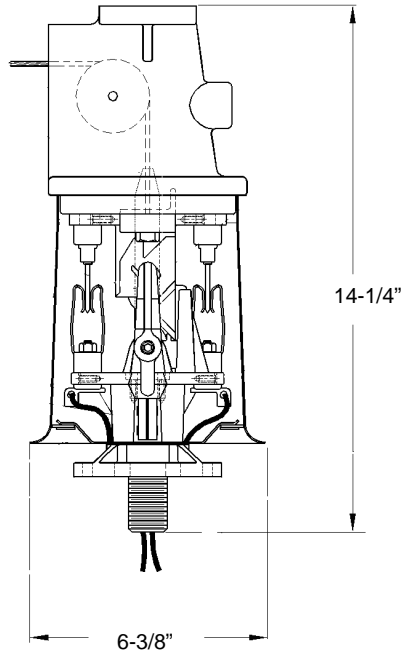
Specifications are subject to change without notice.

MOTORIZED LOWERING SYSTEMS

COMPONENTS

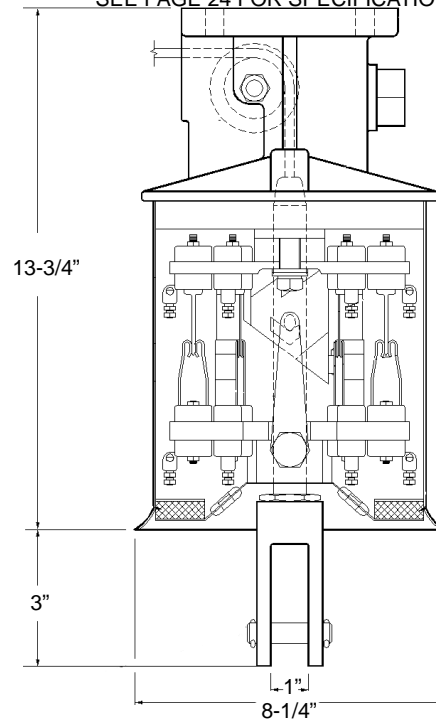
SCU-2A Disconnect Unit For MLS-400-TW4

SEE PAGE 23 FOR SPECIFICATIONS



SCU-2X Disconnect Unit For MLS-600-TW5 & MLS-1100-TW6/7

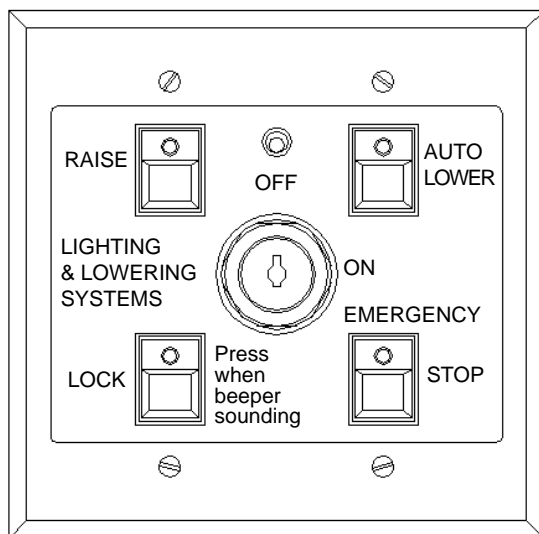
SEE PAGE 24 FOR SPECIFICATIONS



All systems include up to 50 feet of cable. Additional footage is additional cost.

Order by system number and specify cable length

EXAMPLE: MLS-600-125 -----> A system to lift up to 600 Lbs. with 125 feet of cable.



SPECIFICATIONS FOR CP-2 CONTROL PANEL

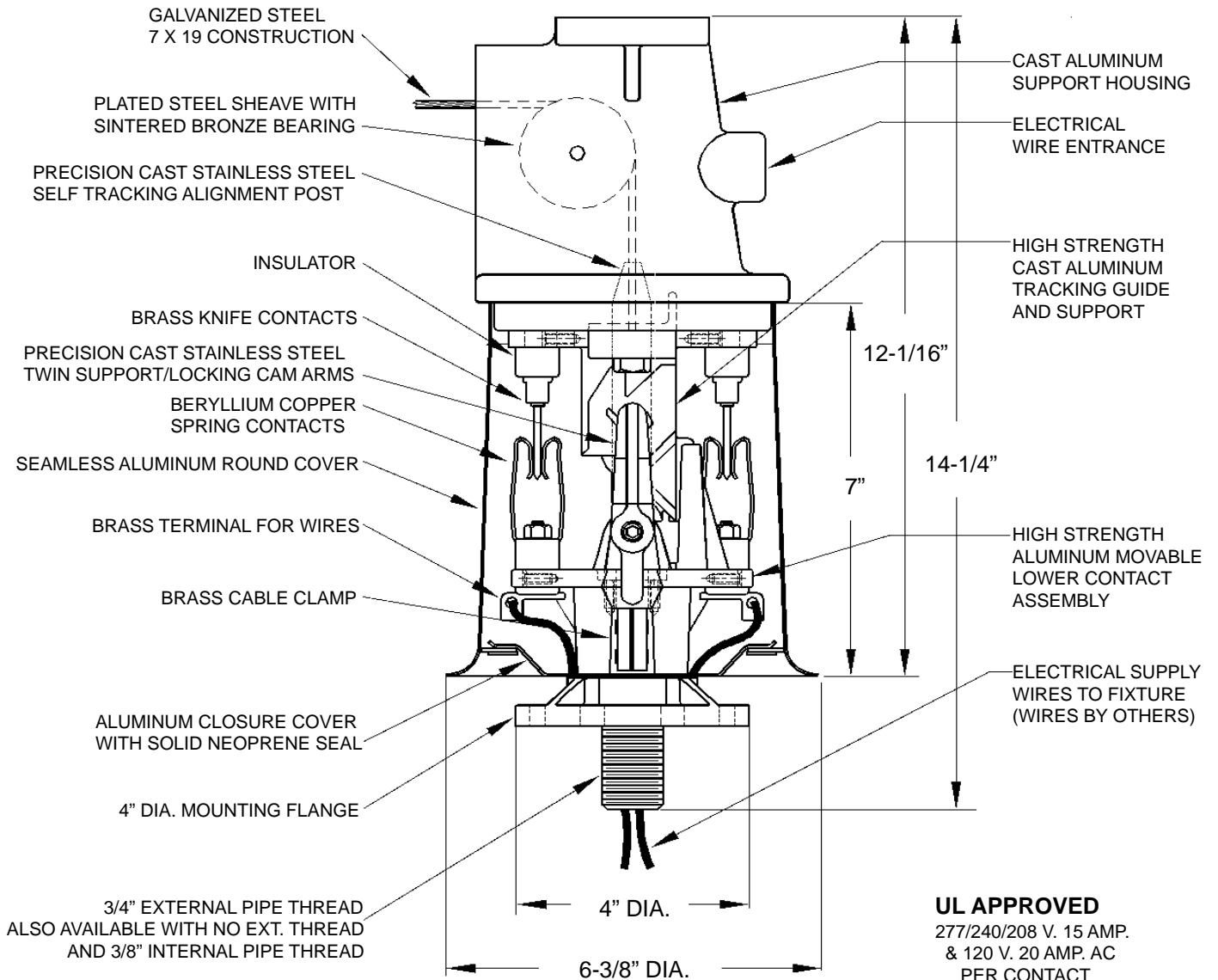
- Computerized panel. Programmable lowering distance.
- TEACH switch on front panel in back of wall plate allows for easy programming of Control Panel.
- Key lock power ON/OFF switch.
- Connection Box: 4" Square Double Deep (3 1/4") box provided.
- The Connection Box comes with 1/2" & 3/4" comb. knock outs.
- White Wall Plate Cover provided.
- Operating Voltage: 105V - 135V AC 50/60 Hz @ 1/4 ampere plus motor current.
- Buttons: Momentary switches with LED lights.
- Equipped with Beeper to indicate when fixture has reached the top.
- LOCK button (feature) assures operator that system is mechanically locked. When locked, cable is slack and power to the motor is off

*All specifications subject to change without notice.

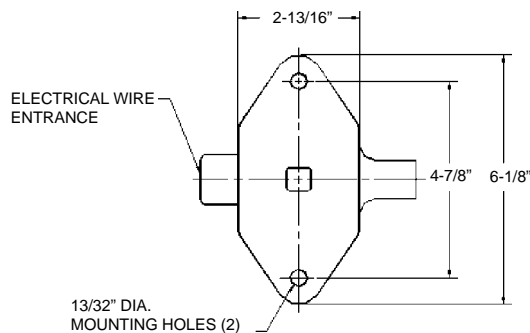
SCU-2A DISCONNECT UNIT

FOR MOUNTING INDOOR LOWERING SYSTEM

Having a flat surface. Load capacity of 400 lbs. with a safety factor of 6 to 1. Two contacts plus ground



UL APPROVED
277/240/208 V. 15 AMP.
& 120 V. 20 AMP. AC
PER CONTACT



MOUNTING DETAIL

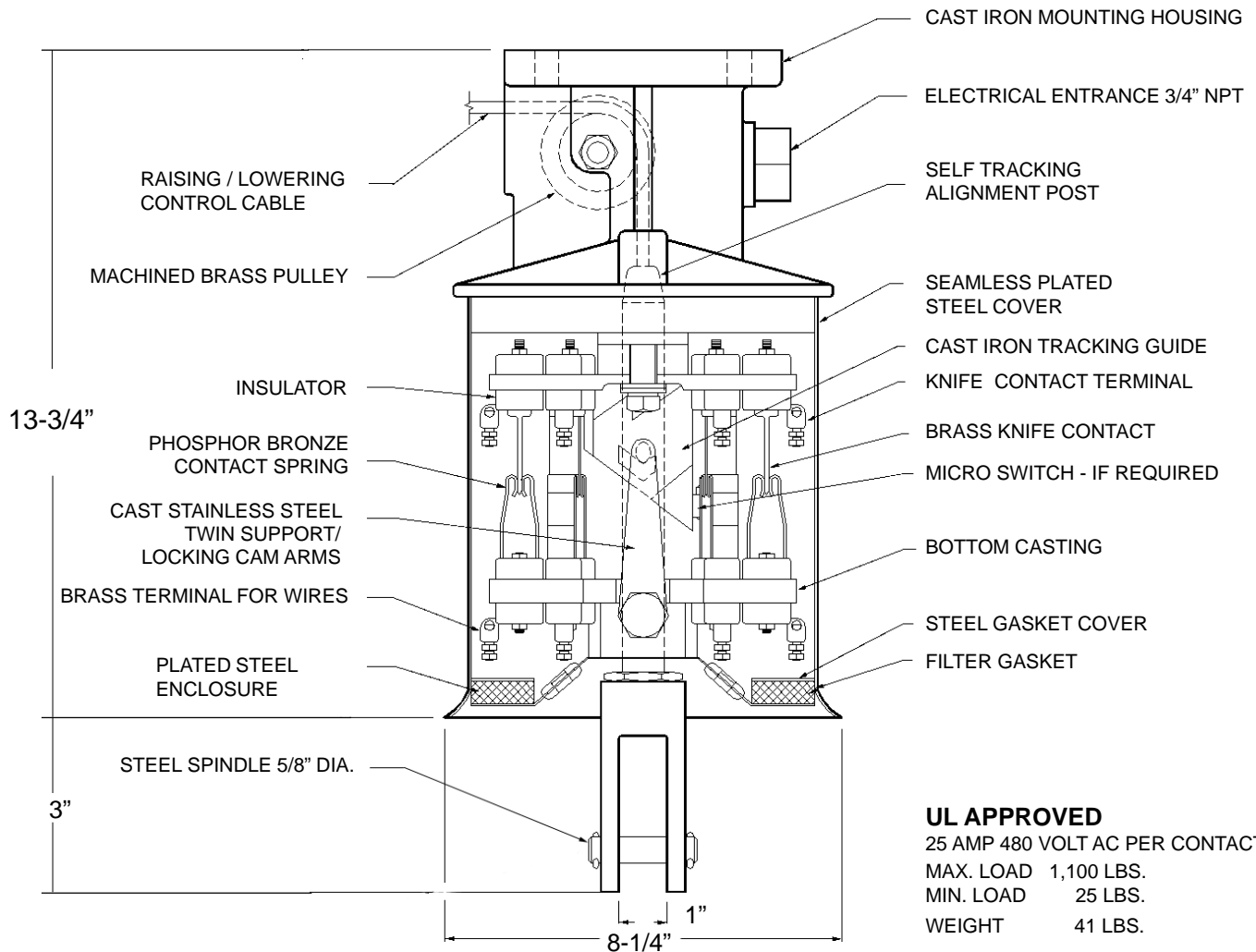
Options	Suffix
(3) Contacts	3C
(4) Contacts	4C
Dust and Waterproof Cable Clamp	DWP
Vertical Pipe Mounting	VPM
Stainless Steel Cover	HD
Counter Weight	CW
3/8" Internal Pipe Thread Mounting	38

Specifications subject to change without notice.

SCU-2X DISCONNECT UNIT

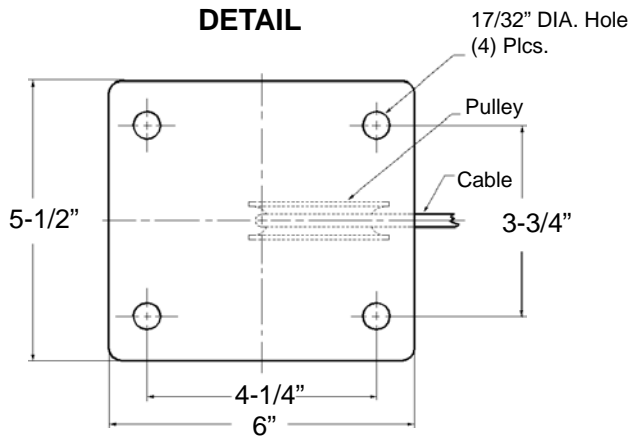
FOR MOUNTING INDOOR LOWERING SYSTEM

Having a flat surface. Load capacity of 1100 lbs. with a safety factor of 4 to 1. Ten contacts plus ground



UL APPROVED
 25 AMP 480 VOLT AC PER CONTACT
 MAX. LOAD 1,100 LBS.
 MIN. LOAD 25 LBS.
 WEIGHT 41 LBS.

TOP MOUNTING DETAIL



OPTION	CATALOG NUMBER
POLISHED BRASS SELF ADJUSTING CANOPY	CAN-12-65

All steel and cast iron surfaces are provided with protective finishes. Gasket material provides an air filtering system within the electrical contact chamber for preventing dust and moisture contamination resistance. All contact systems feature self cleaning contacts. Raising and lowering systems available with manual or motorized operation. SCU-2X for indoor use only

Specifications subject to change without notice.

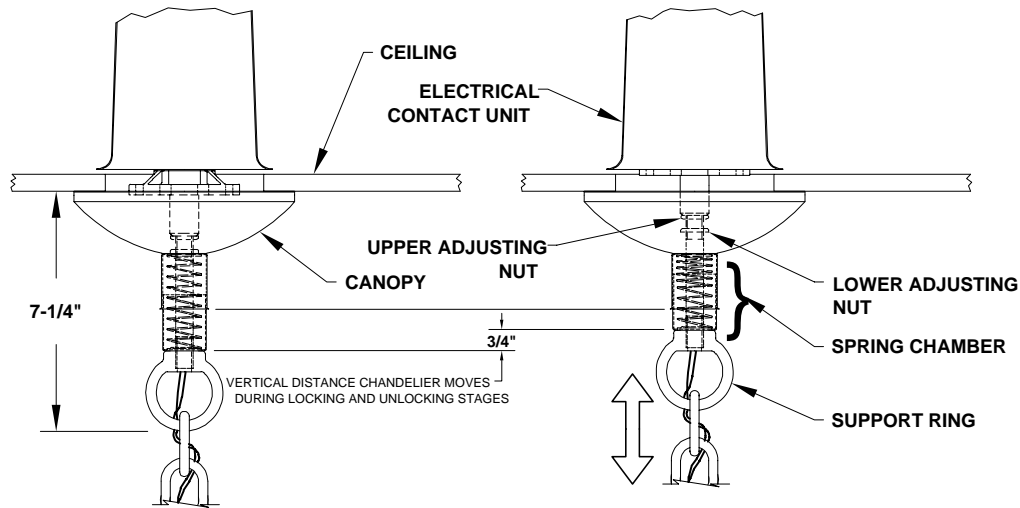


MOTORISED LOWERING SYSTEMS

CANOPY & CABLE

Specification Sheet for CAN-8-65 and GA4408-XX

CAN-8-65: Height-compensating canopy assembly



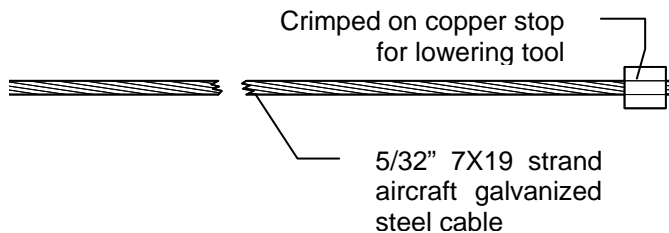
During the lowering or raising of the fixture, when the electrical contacts engage within the ceiling mounted locking device, there is approximately $\frac{3}{4}$ " travel up and down to set the locking mechanism. The height compensating canopy will adjust to this condition to assure that the canopy will remain against the ceiling surface.

CANOPY: One piece 8" diameter and $2\frac{1}{4}$ " deep heavy gauge spinning with standard polished brass finish.

SPRING CHAMBER: Telescoping cups with bright brass finish enclose a $\frac{3}{8}$ " pipe stem that connects the electrical contact unit with the chandelier support ring. A large diameter compression spring within the chamber provides a constant and even pressure to keep the canopy against ceiling.

SUPPORTING RING: A heavy duty solid brass ring is threaded onto the end of the $\frac{3}{8}$ " stem and secured with a lock nut. Electrical wires are fed through a center hole in the ring.

GA4408-XX Galvanized Steel $\frac{5}{32}$ " dia cable from fixture to lowering tool



Min Breaking Strength:
Material:
Cable Diameter:
Construction:
Length (XX):

2800 lbs.
Carbon Steel Zinc Coated
 $\frac{5}{32}$ "
7X19 Strand Preformed
As Specified

- * Wiring from the locking contact mechanism to the chandelier support chains, connecting links, and chandeliers with related hardware are provided by others.
- * All specifications subject to change without notice.

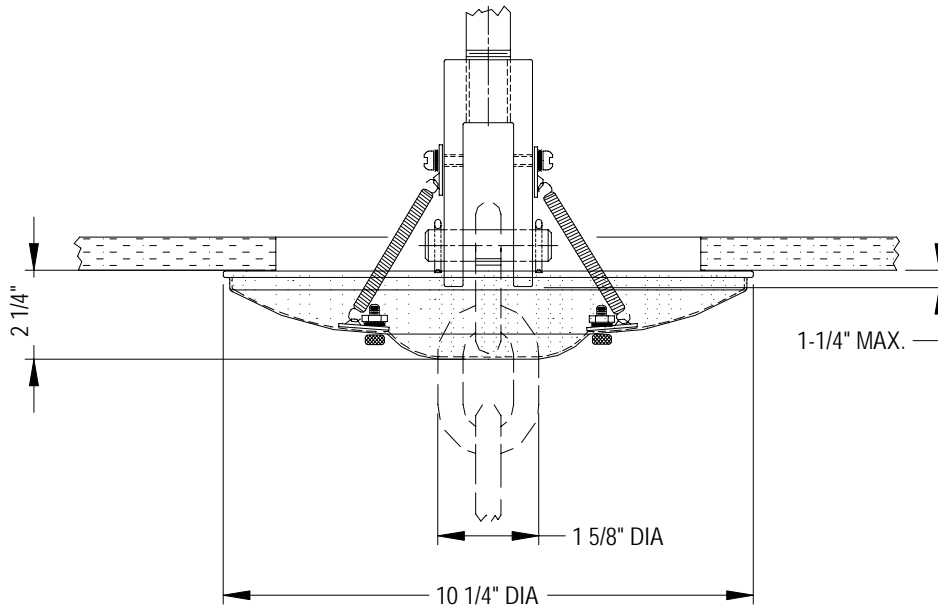


MOTORISED LOWERING SYSTEMS

CANOPY & CABLE

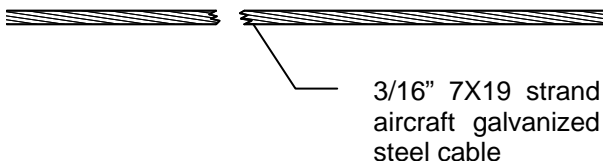
Specification Sheet for CAN-12-65 and GA2208-XX

CAN-12-65: Canopy assembly



DEFINITION:	Spring loaded Canopy used with SCU-2X Contact Unit.
DIMENSION:	10 1/4" Diameter by 2 1/4" Depth.
MATERIAL:	Brass
FINISH:	Polished Bright Brass
SPRINGS:	Two Springs at 180° extends when unit is unlocked, and compresses to ceiling when fixture is in the locked position.
CEILING:	Opening should be from 8" to 8 1/2".

GA2208-XX Galvanized Steel 3/16" dia cable from fixture to lowering tool



Min Breaking Strength:	4200 lbs.
Material:	Carbon Steel Zinc Coated
Cable Diameter:	3/16"
Construction:	7X19 Strand Preformed
Length (XX):	As Specified

- * Wiring from the locking contact mechanism to the chandelier support chains, connecting links, and chandeliers with related hardware are provided by others.
- * All specifications subject to change without notice.



MOTORISED LOWERING SYSTEMS

SCU-2A-XC

Specification Sheet for SCU-2A-XC Electrical Disconnect Unit (EDU) with X Contacts Where X is 4,6,8

The EDU shall have a **3-way tracking guide and support**. It shall be constructed of precision cast high strength aluminum alloy 356-T6. A permanently fixed position piece incorporating a special tracking guide system permits the moveable portion of the disconnect unit to align in the same position every time the system is operated, thereby eliminating the need to re-orientate the fixture. The EDU shall have twin high strength stainless steel locking cams securing the load of the lower contact assembly and fixture. All tension on the cable is relieved when the fixture is in the raised position.

The **Multi-contact Connector** assembly shall be modular for easy installation and retrofit requirements. All pin and socket contacts shall be insertable and removable. The connector shall also have qty X size 12 contacts rated at 35 Amps with gold plating per QQ-S-365. All hardware shall be corrosion resistant stainless steel. It shall have a self-aligning and self-adjusting mechanical system comprised of two principal assemblies:

The **upper contact half** shall house the socket contacts. It shall incorporate spring assisted polymer contact body with precision-machined guideposts. The socket contact body shall have integral guideposts for precise contact alignment.

The **lower contact half** shall house the pin contacts comprised of spring assisted polymer contact body with precision-machined guidepost receivers. The pin contact body aligns with guideposts of integral socket body guideposts.

The EDU **cylinder housing** shall be one-piece hydro-spun heavy gauge aluminum. It is also available in stainless steel. Painted finish to match surrounding structure or fixture is optional.

The unit shall have a guidepost constructed of precision cast high strength stainless steel. It shall utilize a cast-in-place guide bar for precise alignment of *Lower Contact Assembly* with the fixed portion of the *EDU*.

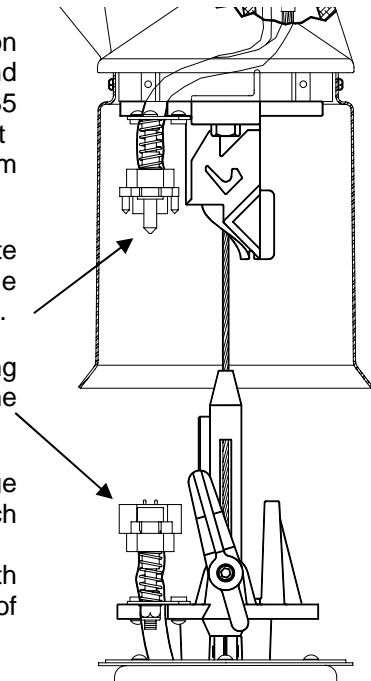
The EDU shall have **twin (2) tracking support arms** made of precision cast high strength stainless steel. When locked in the *3-Way Tracking Guide and Support*-notches, the *Twin Tracking/Support Arms* shall hold the weight of the fixture and components and it shall remove all tension from the *Control Cable* or *Lowering Cable*.

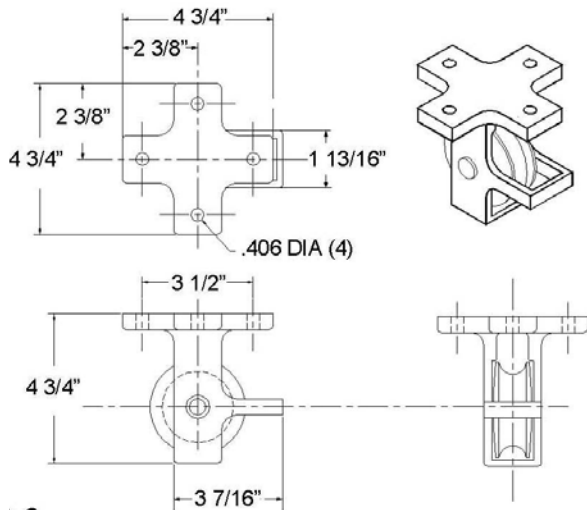
The lower contact assembly shall be constructed of precision cast high strength aluminium alloy. It shall feature a cast-in-place guide that mate with the fixed portion of the *Disconnect Unit* to aid in tracking and stability. All hardware used on the *Lower Contact Assembly* as well as the entire *Disconnect Unit* shall be made of corrosion resistant stainless steel.

The disconnect unit shall have a **housing seal** made up of a spun aluminum closure ring with a sealing gasket constructed of extra flexible polymer providing a weather-tight seal between *Lower Contact Assembly* and *Disconnect Unit Cover*. This provides a flexible environmental seal. Seal swipes and conforms to interior of cylinder housing during all operating stages of the disconnect unit.

A **mounting casting** shall be provided made of heavy duty cast aluminum alloy. It shall contain a sheave (pulley) with a permanently lubricated bronze bearing.

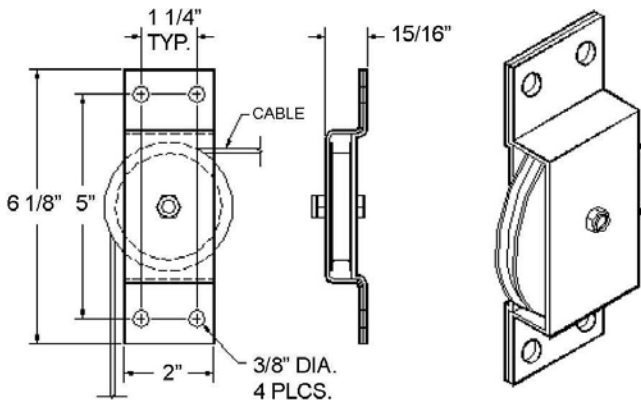
* All specifications subject to change without notice.





3P-6

Various types of pulleys are available and should be designed for exact load and gear box. All pulleys have oilite bronze bearings for maintenance free life. This also insures their use for dirty atmosphere applications. Painted pulleys are available for highly corrosive areas. Pulleys can be spaced 6-30' apart on horizontal runs. A pulley must be used at every 30' of horizontal straight runs. Pulleys are required when vertical or horizontal changes in direction occur. It is important that pulleys are properly aligned. The centerline of the pulley-sheave groove must coincide with the centerline of the cable path when installing. Always take pulley friction into consideration if loads are near limits of the gear box. Pulleys must be installed on rigid surfaces which are able to withstand at least 5 X load of the fixture in all directions. The installation must be approved by others.



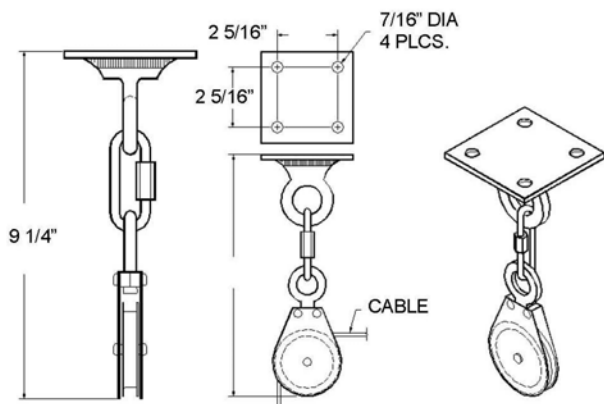
3P-3

3P-6

Load capacity for a 3P-6 pulley is 20-400 lbs. A 3P-6 pulley can facilitate a change in direction of the cable from wall to ceiling i.e. from vertical to horizontal. 3P-6 pulleys should be spaced 6-30' apart on horizontal runs. Change in direction of cable to angles other than 90 degrees is possible. See page p3 for details. This pulley allows the twisted quick-link to pass through.

3P-3

Load capacity for a 3P-3 pulley is 20-400 lbs. A 3P-3 pulley can facilitate a change in direction of the cable on the same plane. See page p3 for examples and details.

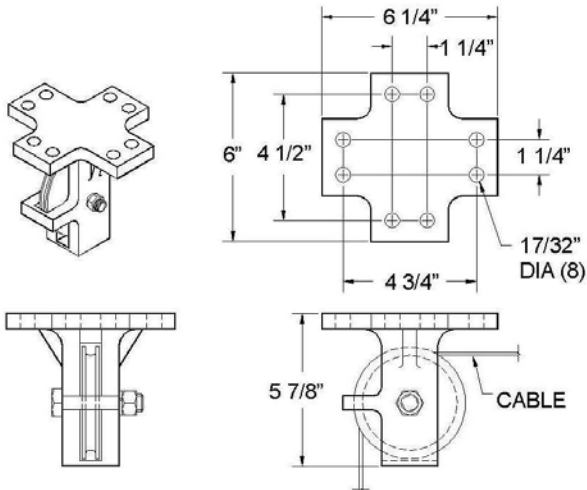


3P-5

3P-5

Load capacity for a 3P-5 pulley is 20-400 lbs. A 3P-5 pulley can facilitate a change in direction of the cable in different planes due to the swivel nature.

* Specifications subject to change without notice.



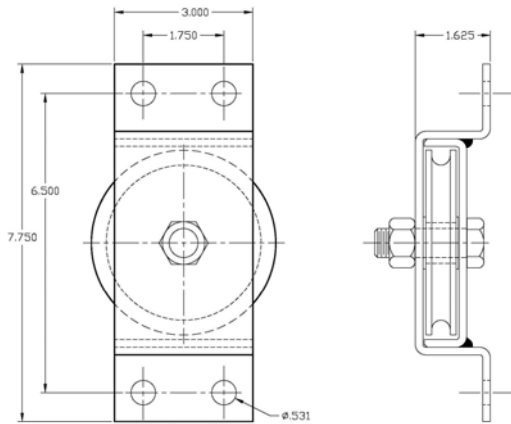
4P-4

4P-4

Load capacity for a 4P-6 pulley is 400-1100 lbs. A 4P-4 pulley can facilitate a change in direction of the cable from wall to ceiling i.e. from vertical to horizontal. 4P-4 pulleys should be spaced 6-30' apart on horizontal runs. Change in direction of cable to angles other than 90 degrees is possible. See page p3 for details.

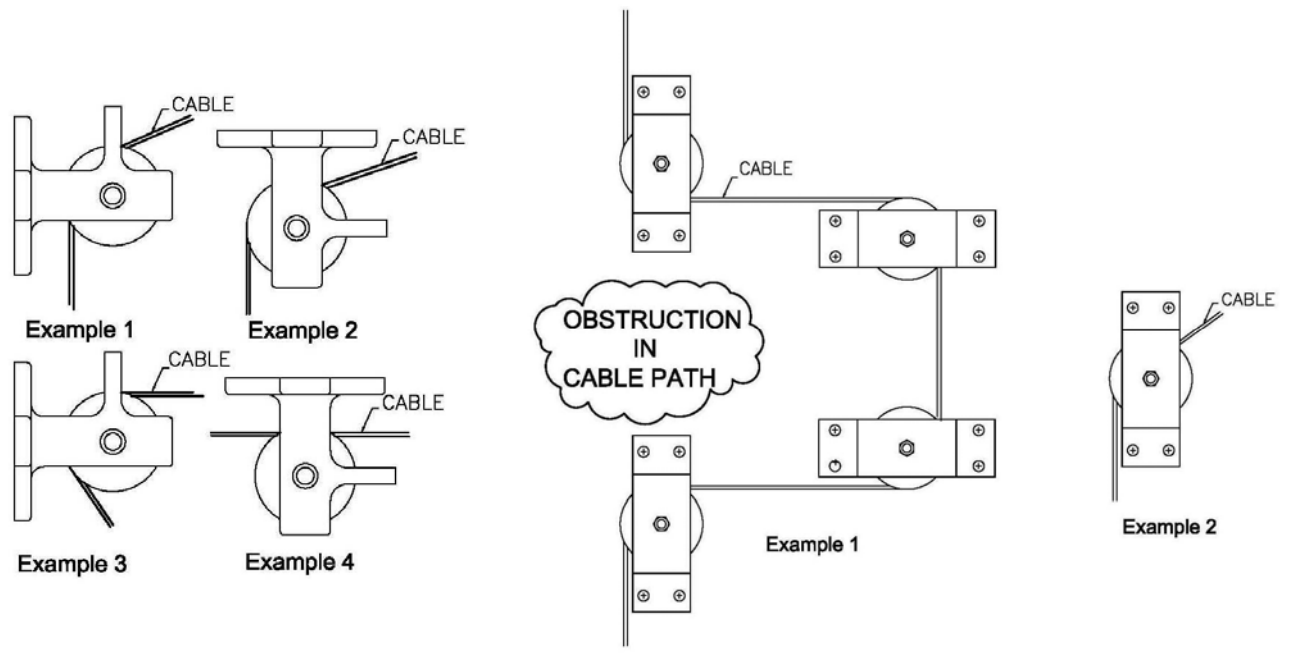
4P-3

Load capacity for a 4P-3 pulley is 400-1100 lbs. A 4P-3 pulley can facilitate a change in direction of the cable on the same plane. See page p3 for examples on uses of 4P-3 pulley.



4P-3

* Specifications subject to change without notice.



3P-6 and 4P-4 Uses

3P-3 and 4P-3 Uses

3P-6 and 4P-4 pulleys (depending upon load) can facilitate a change in direction of the cable from wall to ceiling i.e. from vertical to horizontal. These pulleys should be spaced 6-30' apart on horizontal runs. The above examples show that change in direction of cable to angles other than 90 degrees is possible. These pulleys can be placed horizontally (examples 2 and 4), vertically (examples 1 and 3) and on inclined surfaces for maximum versatility as long as the cable path is aligned to the pulley sheave groove and as long as the cable path is not interfered by any obstacles.

3P-3 and 4P-3 pulleys (depending upon load) can facilitate a change in direction of the cable on the same plane. Example 1 is a simple way using 4 pulleys to go around an obstruction in the cable path.

* Specifications subject to change without notice. Details shown are intended as an application example only. Actual installation details may vary. Contact manufacturer's representative or factory for specific details about special installation application or other information. Lifting capacity is 400 lbs and must not be exceeded.



MOTORISED LOWERING SYSTEMS

ORDERING INFORMATION

Ordering Information for the MLS

PROJECT NAME:
QUOTE REQUEST FROM:
SALES REPRESENTATIVE NAME:
EMAIL:
DISTRIBUTOR:
WEIGHT OF FIXTURE:
VOLTAGE OF FIXTURE:
NUMBER OF CIRCUITS:
FIXTURE MOUNTING REQUIREMENTS:

Standard system comes with 3/4" external pipe threads. Also available in 3/8" internal threads.

For special requirements, please contact factory.

VERTICAL CABLE RUN (V):
HORIZONTAL CABLE RUN (H):
LOWERING DISTANCE (L):
**NUMBER OF ADDITIONAL PULLEYS
 REQUIRED:**
3P-3
3P-6
3P-5
4P-4
4P-3

A pulley is required every 30 feet of horizontal straight run and every change in direction of cable.

See Specification sheets for details to select the appropriate type of pulley.

LLS CANOPY REQUIRED?:
LLS CHAINLINKS REQUIRED?:
QUANTITY:
DATE:
SIGNATURE AND STAMP:

COMMENTS

The disconnect unit must be mounted to a HORIZONTAL RIGID STRUCTURE. All mounting must be able to withstand static and dynamic loading for at least 5 X weight of the fixture in all directions. This structure must be approved by others. The winch or motor assembly must be placed 6-30' away from the first pulley or disconnect unit. A pulley must be used every 6-30' of horizontal straight run. Centerline of pulley groove must be aligned with cable path. Cable path must be free from interference. Please visit our website at www.lightinglowering.com for specification-sheets if not provided with the quote. For large quantity, consider choosing manual systems with portable lowering tool for cost reduction. If the system is mounted under certain climatic conditions, please inform us. Please provide any other specifications, conditions or special requirements at this time.